



AKR1CL2 Polyclonal Antibody

Catalog No	YP-Ab-02488
Isotype	IgG
Reactivity	Human;Rat;Mouse;
Applications	WB;IHC;IF;ELISA
Gene Name	AKR1E2
Protein Name	1,5-anhydro-D-fructose reductase
Immunogen	The antiserum was produced against synthesized peptide derived from human AKR1CL2. AA range:141-190
Specificity	AKR1CL2 Polyclonal Antibody detects endogenous levels of AKR1CL2 protein.
Formulation	Liquid in PBS containing 50% glycerol, 0.5% BSA and 0.02% sodium azide.
Source	Polyclonal, Rabbit,IgG
Purification	The antibody was affinity-purified from rabbit antiserum by affinity-chromatography using epitope-specific immunogen.
Dilution	WB: 1/500 - 1/2000. IHC: 1/100 - 1/300. ELISA: 1/10000.. IF 1:50-200
Concentration	1 mg/ml
Purity	≥90%
Storage Stability	-20°C/1 year
Synonyms	AKR1E2; AKR1CL2; AKRDC1; 1; 5-anhydro-D-fructose reductase; AF reductase; Aldo-keto reductase family 1 member C-like protein 2; Aldo-keto reductase family 1 member E2; LoopADR; Testis-specific protein; hTSP
Observed Band	37kD
Cell Pathway	Cytoplasm .
Tissue Specificity	Specifically expressed in testis (PubMed:12604216, PubMed:15118078). Expressed in testicular germ cells and testis interstitial cells (PubMed:15118078).
Function	catalytic activity:1,5-anhydro-D-glucitol + NADP(+) = 1,5-anhydro-D-fructose + NADPH.,function:Catalyzes the NADPH-dependent reduction of 1,5-anhydro-D-fructose (AF) to 1,5-anhydro-D-glucitol. Can also catalyze the reduction of various aldehydes and quinones.,similarity:Belongs to the aldo/keto reductase family.,tissue specificity:Testis-specific.,
Background	The protein encoded by this gene is a member of the aldo-keto reductase superfamily. Members in this family are characterized by their structure (evolutionarily highly conserved TIM barrel) and function (NAD(P)H-dependent oxido-reduction of carbonyl groups). Transcripts of this gene have been reported in specimens of human testis. Alternative splicing results in multiple transcript variants. [provided by RefSeq, Aug 2012],



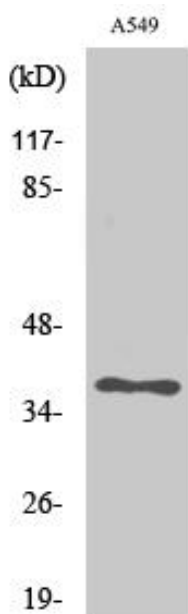
matters needing attention

Avoid repeated freezing and thawing!

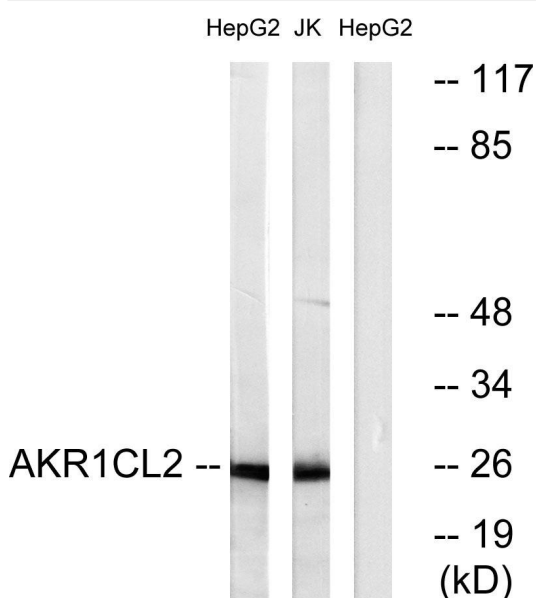
Usage suggestions

This product can be used in immunological reaction related experiments. For more information, please consult technical personnel.

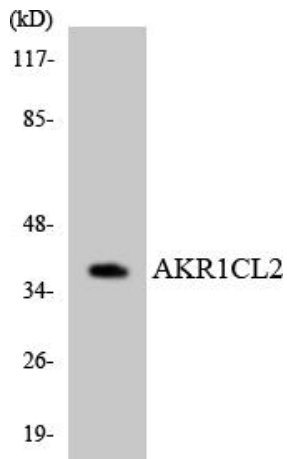
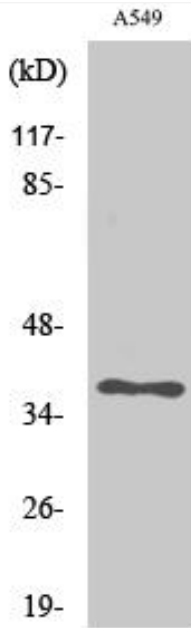
Products Images



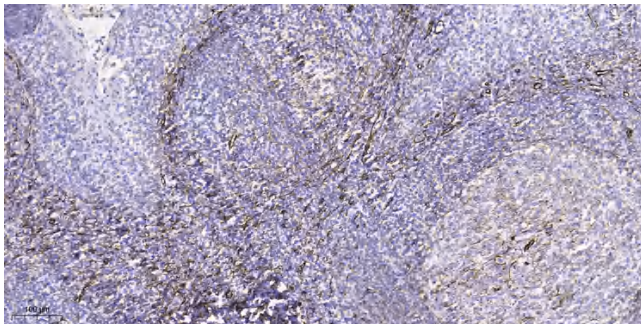
Western Blot analysis of various cells using AKR1CL2 Polyclonal Antibody diluted at 1:500



Western blot analysis of lysates from HepG2 and Jurkat cells, using AKR1CL2 Antibody. The lane on the right is blocked with the synthesized peptide.



Western blot analysis of the lysates from HT-29 cells using AKR1CL2 antibody.



Immunohistochemical analysis of paraffin-embedded human tonsil. 1, Tris-EDTA, pH9.0 was used for antigen retrieval. 2 Antibody was diluted at 1:200(4° overnight). 3, Secondary antibody was diluted at 1:200(room temperature, 45min).